

FIG. 1

		DEPARTMENT OF MINES—SOUTH AUSTRALIA	Scale: 1:800 000
Compiled: JDN		ANGAS-BREMER IRRIGATION AREA LOCALITY PLAN	Date: 19.1.77
Drn.	Ckd.		Drg. No.
			S 12542

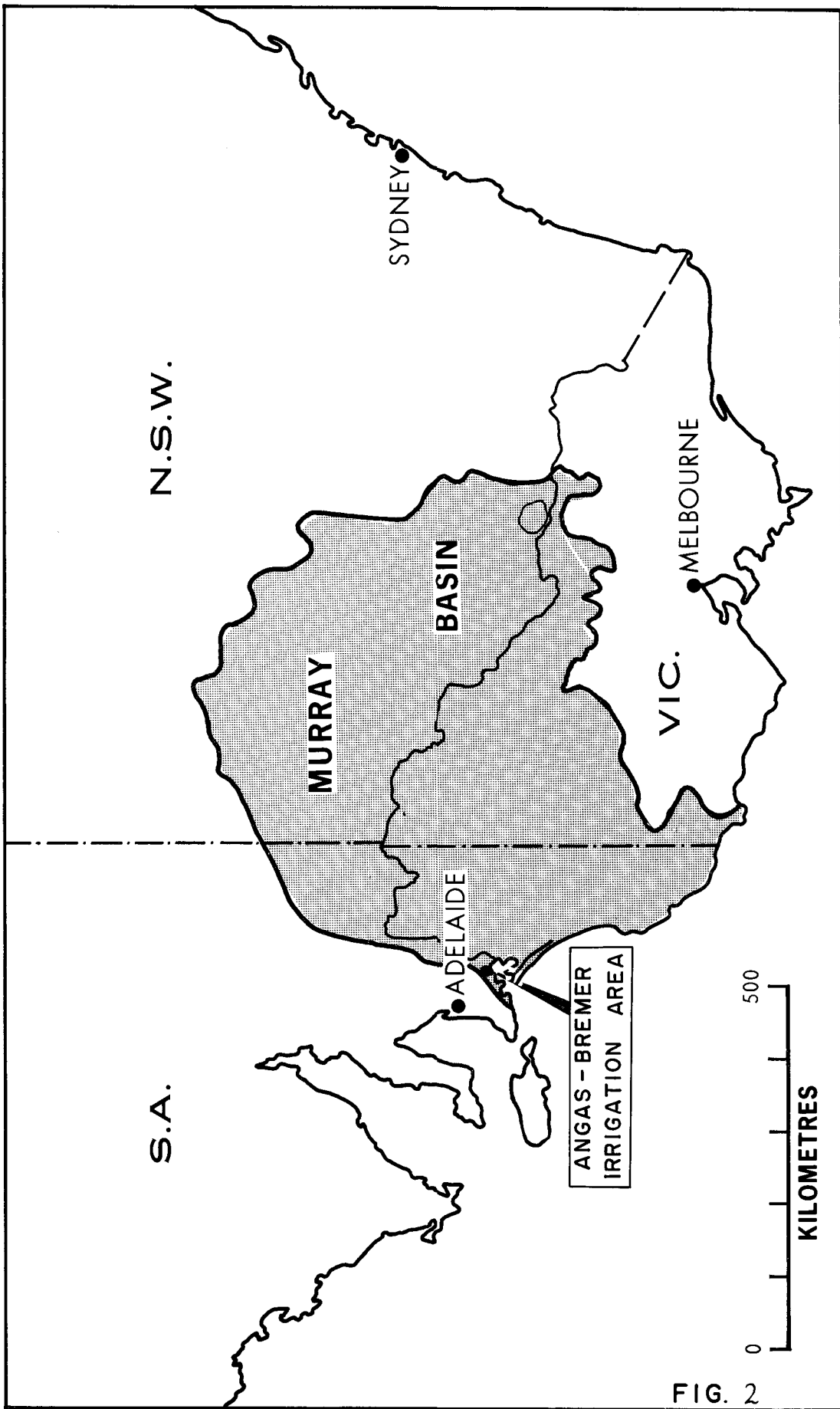
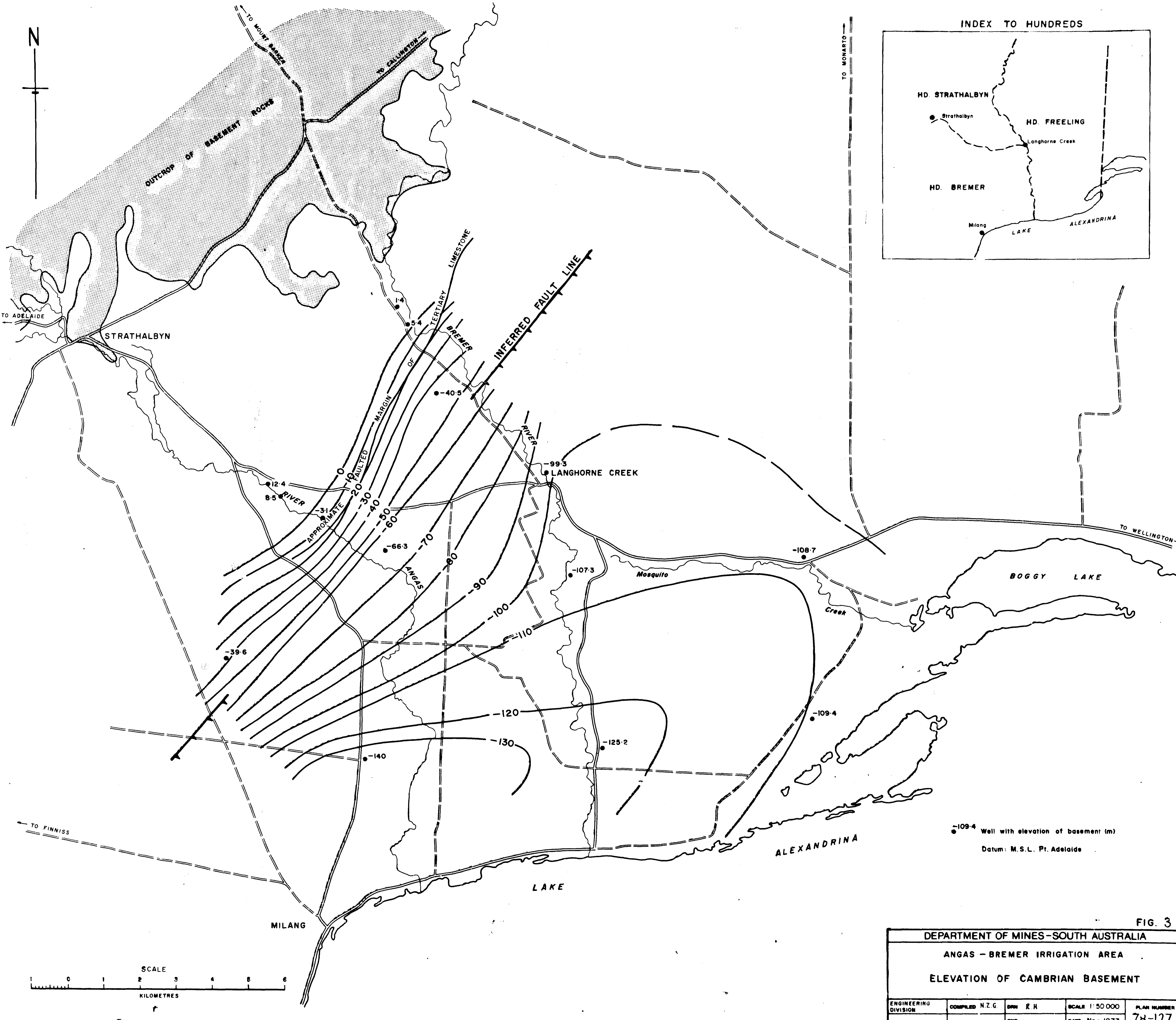
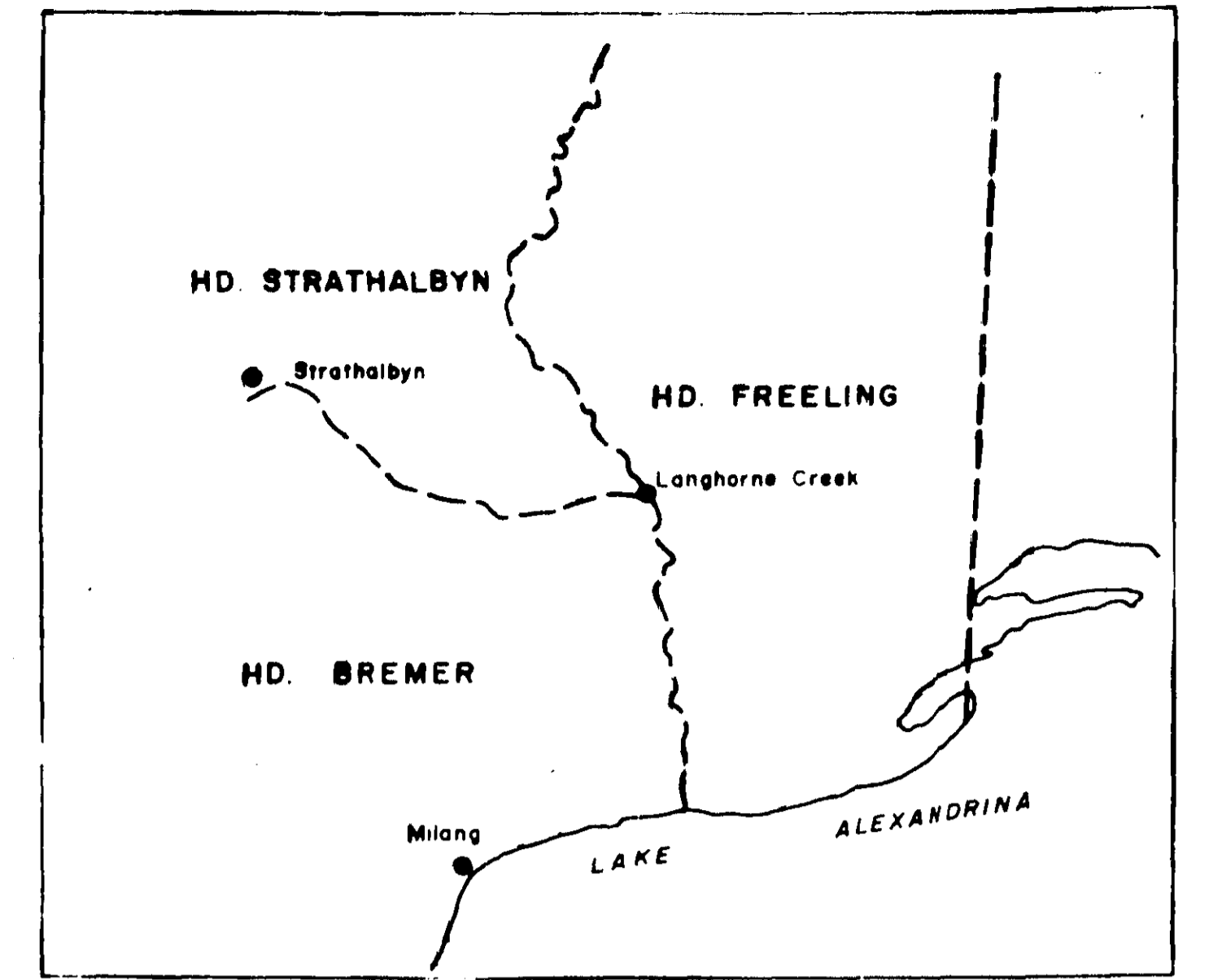


FIG. 2

		DEPARTMENT OF MINES—SOUTH AUSTRALIA	Scale: 1: 12,500 000
Compiled: JOW		ANGAS-BREMER IRRIGATION AREA THE MURRAY BASIN	Date: 19.1.77
Drn.	Ckd.		Drq. No. S12543



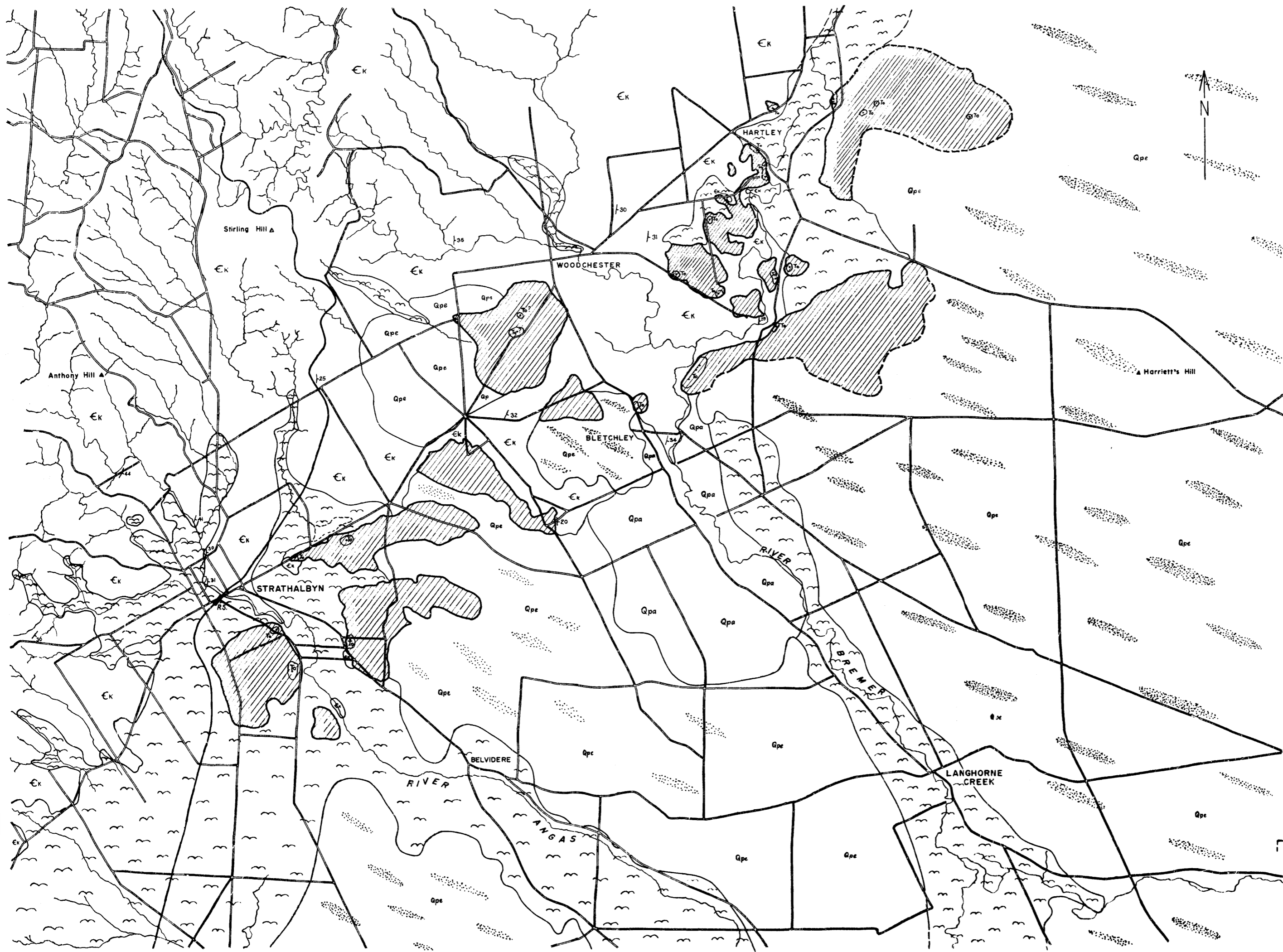
INDEX TO HUNDREDS



-109.4 Well with elevation of basement (m)
Datum: M.S.L. Pt. Adelaide

FIG. 3

DEPARTMENT OF MINES - SOUTH AUSTRALIA				
ANGAS - BREMER IRRIGATION AREA				
ELEVATION OF CAMBRIAN BASEMENT				
ENGINEERING DIVISION	COMPILED N.Z.G.	DWN R.H.	SCALE 1:50 000	PLAN NUMBER
		CKD	DATE Nov. 1977	78-127



LEGEND

- Alluvial flat deposits, clays
- Alluvial sands - fine red sands
- Kunkarised sand dune deposits - dune trends dotted
- Continuous calcrete cover, with inferred relationship to Tertiary limestone
- Actual outcropping limestone sequence - calcareous sandstone, dolomitic sandstone, fossiliferous limestone, coarse quartz sands
- Micaschist, with quartz veins
- Geological boundary
- Inferred geological boundary
- Strike and dip 20°
- Road
- Railway
- River

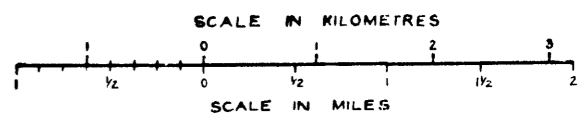
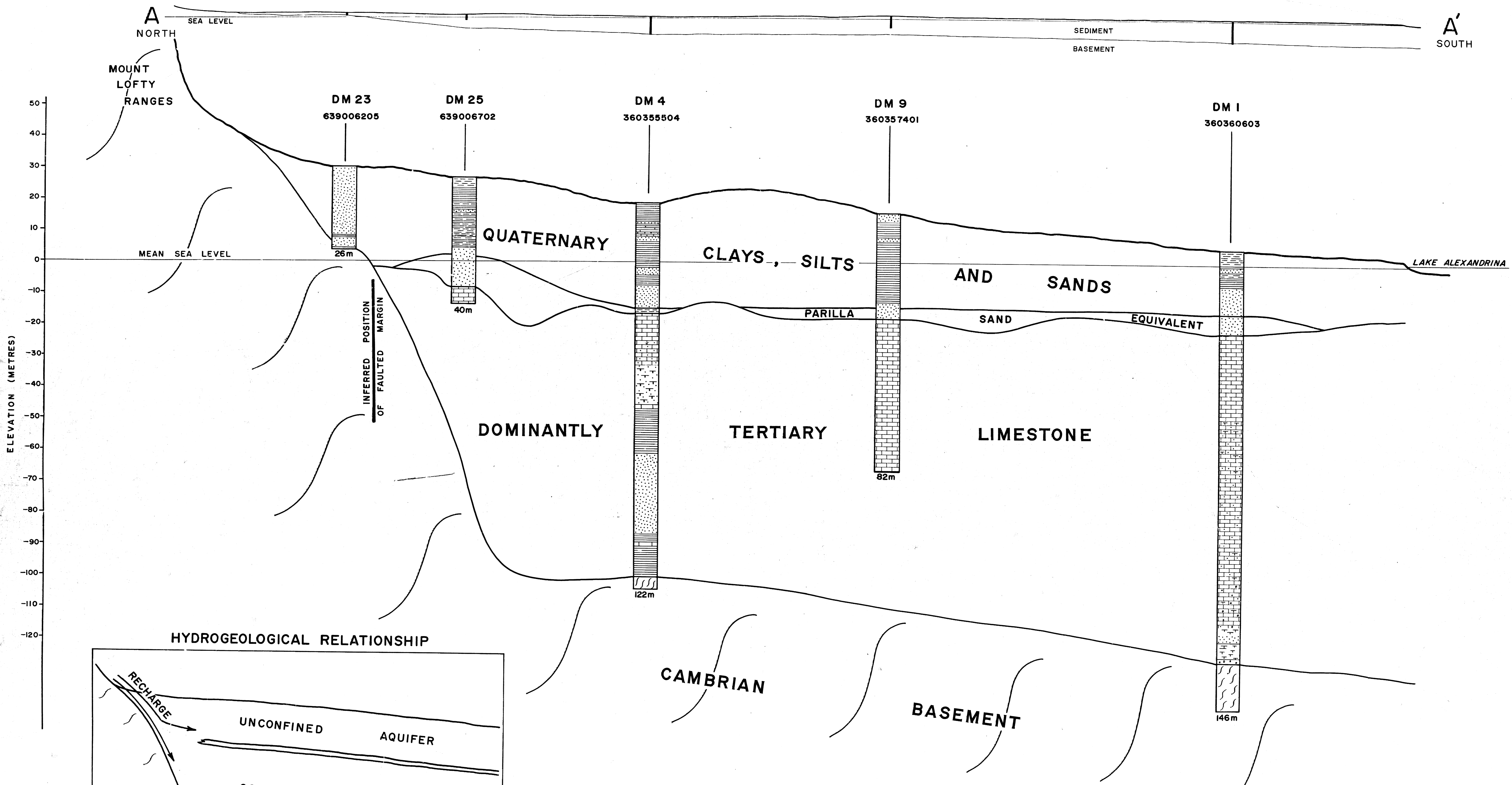


FIG. 4

DEPARTMENT OF MINES - SOUTH AUSTRALIA			
NORTHERN MILANG-LANGHORNE CREEK BASIN			
GEOLOGICAL PLAN			
HYDROGEOLOGY SECTION	Drn. P.S.H.	SCALE: 40 chns = 1" (orig.)	
GEOLOGIST	Ted. D.J.M.	72-96	Hbc
Director of Mines	SEN. GEOLOGIST	Edw.	DATE: 7 Mar. 1972

NATURAL SCALE SECTION



HYDROGEOLOGICAL RELATIONSHIP

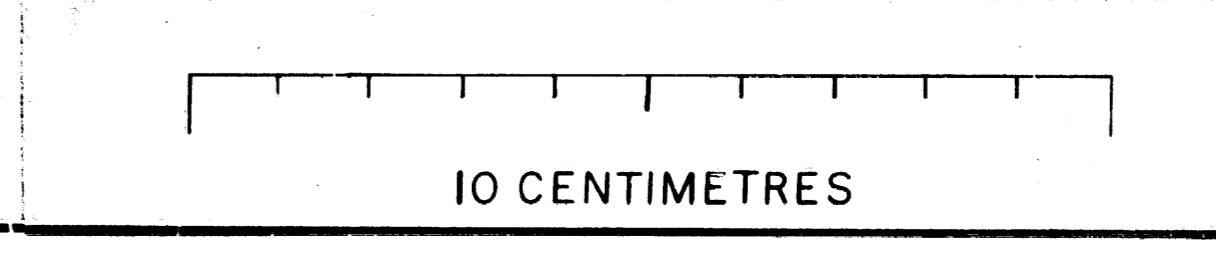
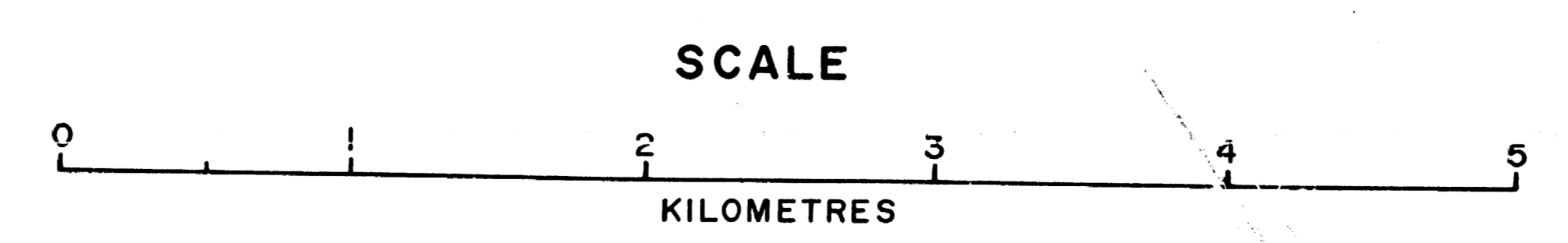
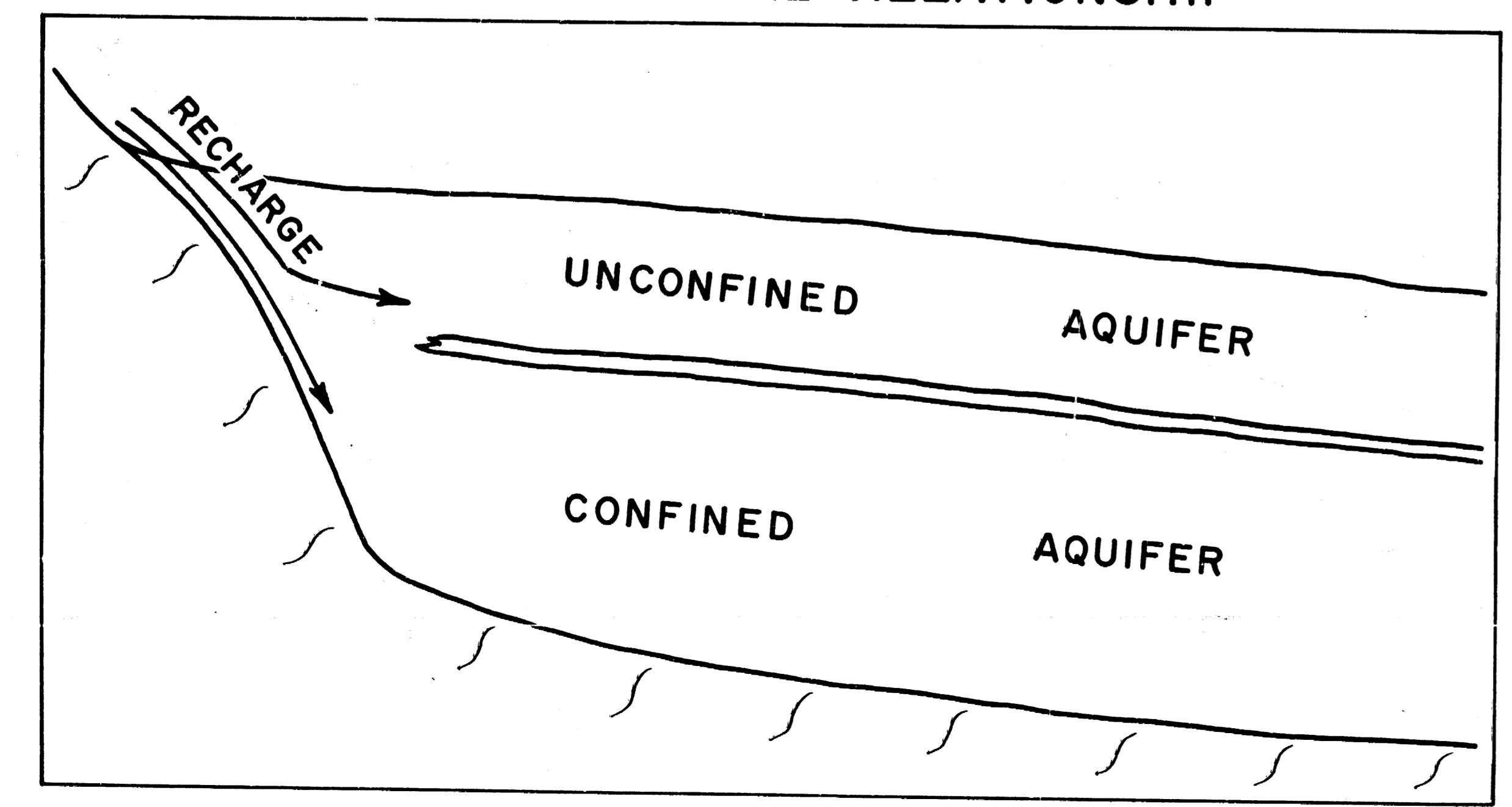


FIG.

DEPARTMENT OF MINES - SOUTH AUSTRALIA			
ANGAS - BREMER IRRIGATION AREA			
TERTIARY AND QUATERNARY SEDIMENTS			
GEOLOGICAL SECTION A-A'			
COMPILED J.D.W.	DRN R.H.	SCALE 1:25000	PLAN NUMBER
DIRECTOR OF MINES	CKD	DATE Nov. 1977	77-1072

NATURAL SCALE SECTION

B WEST SEDIMENT BASEMENT SEA LEVEL B' EAST

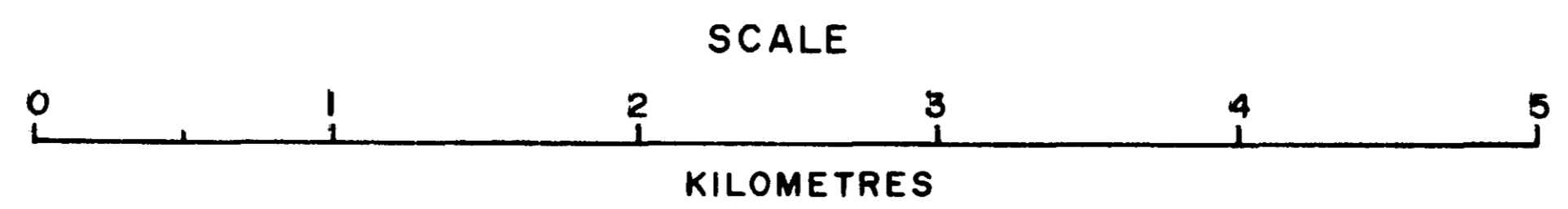
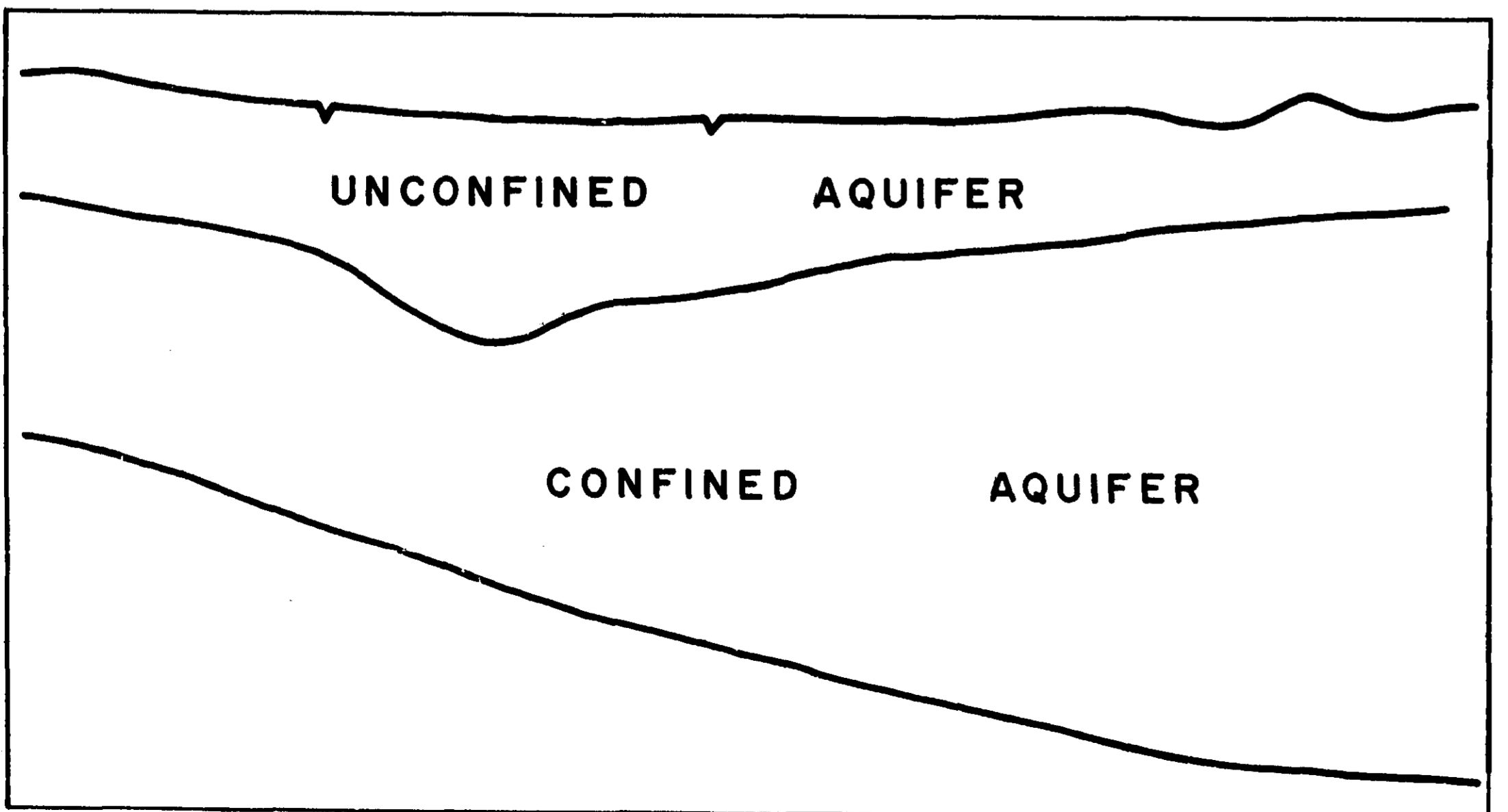
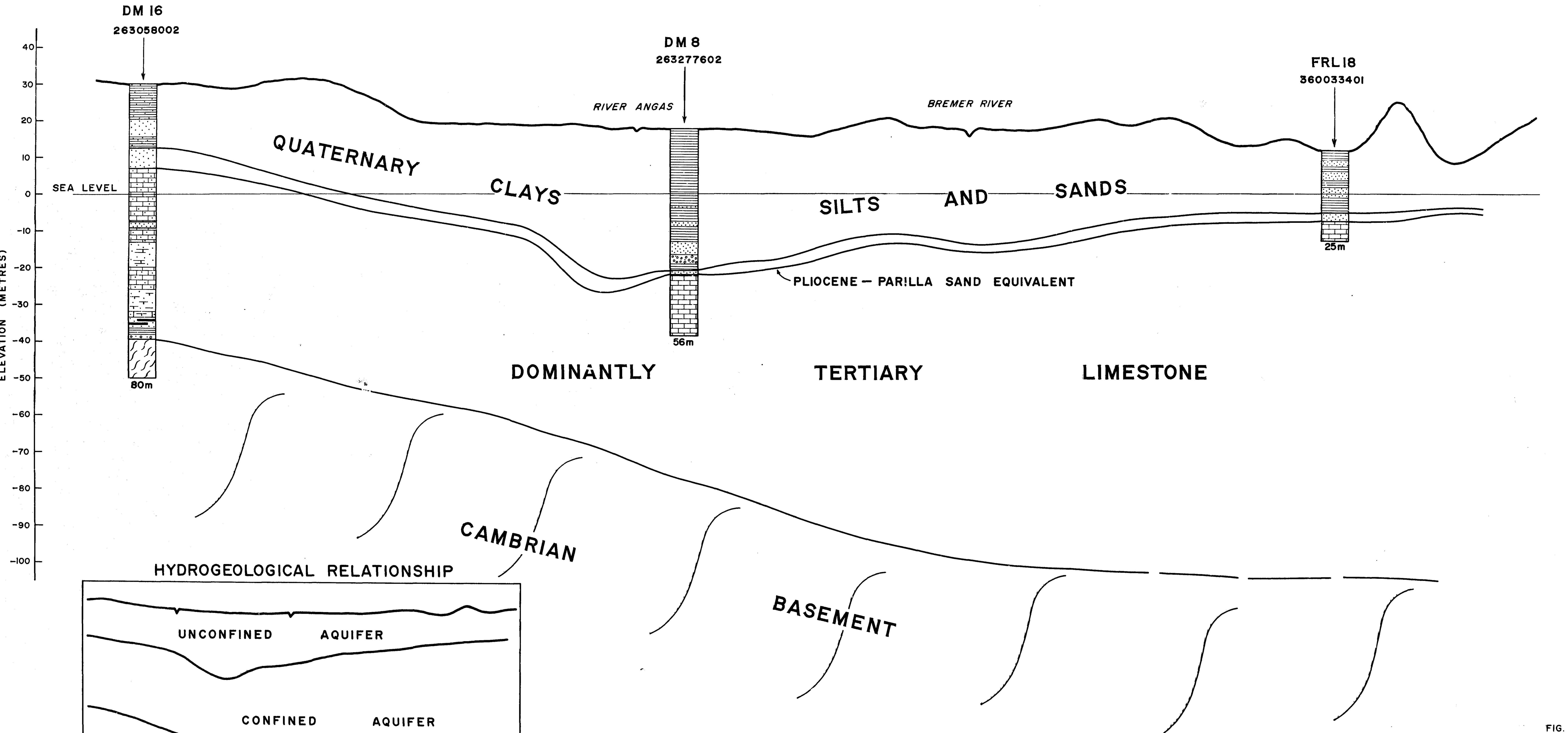


FIG.

DEPARTMENT OF MINES - SOUTH AUSTRALIA				
ANGAS - BREMER IRRIGATION AREA				
TERTIARY AND QUATERNARY SEDIMENTS				
GEOLOGICAL SECTION B-B'				
ENGINEERING DIVISION	COMPILED J.D.W.	DRN R.H.	SCALE 1:25 000	PLAN NUMBER
DIRECTOR OF MINES		CKD	DATE NOV. 1977	78-257